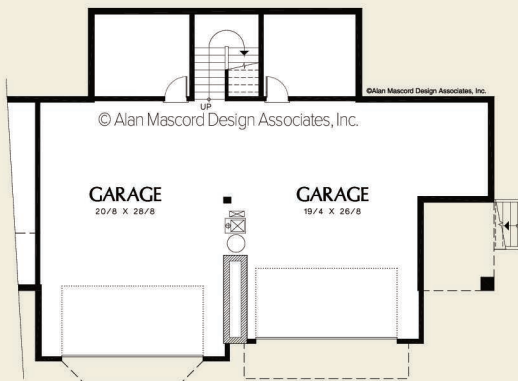
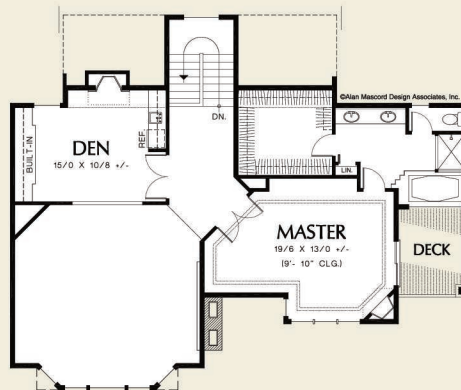
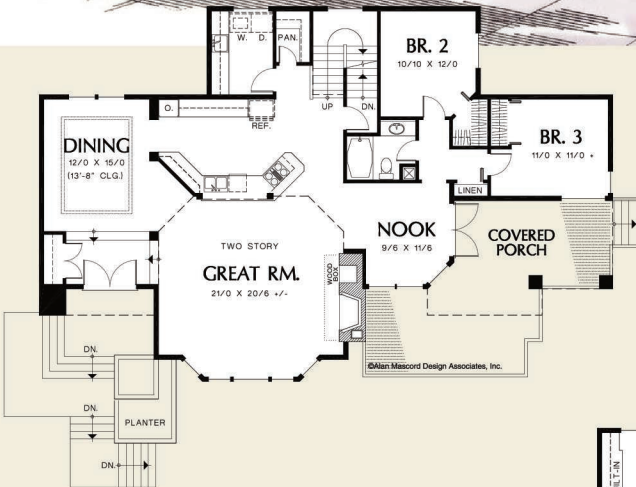
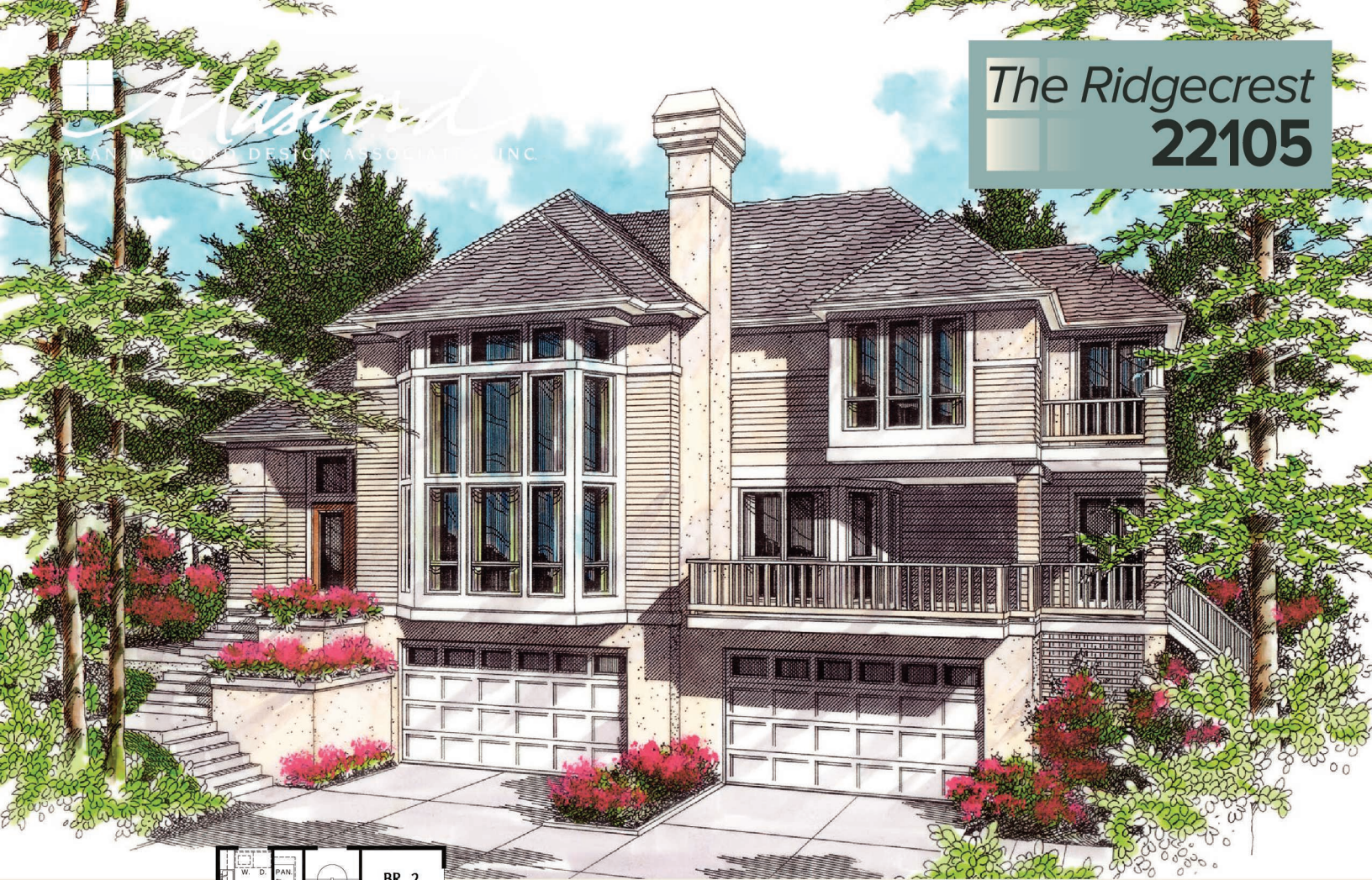


The Ridgecrest 22105



Upper Floor	907 Sq. Ft
Main Floor	1765 Sq. Ft
Total Area	2672 Sq. Ft

Width	Depth
65'-0"	42'-6"

Height (Main Flr to Peak): 29'-0"
(to Midpt of Roof): 24'-0"

Plan Designed for Sloping Lots



ALAN MASCORD DESIGN ASSOCIATES, INC
2187 NW Reed St, Suite 100, Portland, OR 97210 · 503.225.9161

mascord.com | houseplans.co