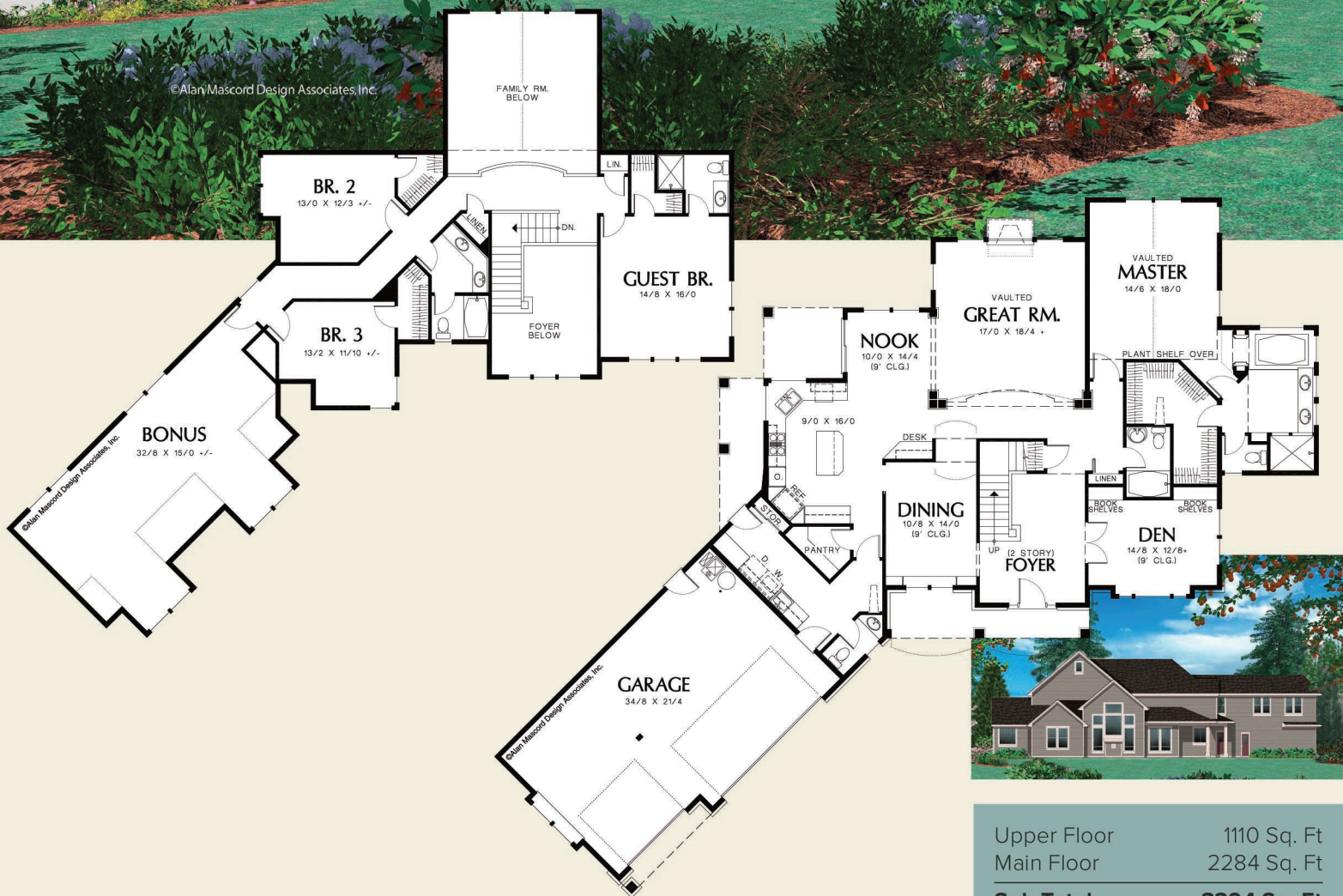




©Alan Mascord Design Associates, Inc.



Upper Floor	1110 Sq. Ft
Main Floor	2284 Sq. Ft
Sub Total	3394 Sq. Ft
Bonus	+613 Sq. Ft
Width	93'-7"
Depth	78'-11"
Height	(Main Flr to Peak): 30'-2" (to Midpt of Roof): 23'-11"



ALAN MASCORD DESIGN ASSOCIATES, INC
2187 NW Reed St, Suite 100, Portland, OR 97210 · 503.225.9161
mascord.com | houseplans.co