

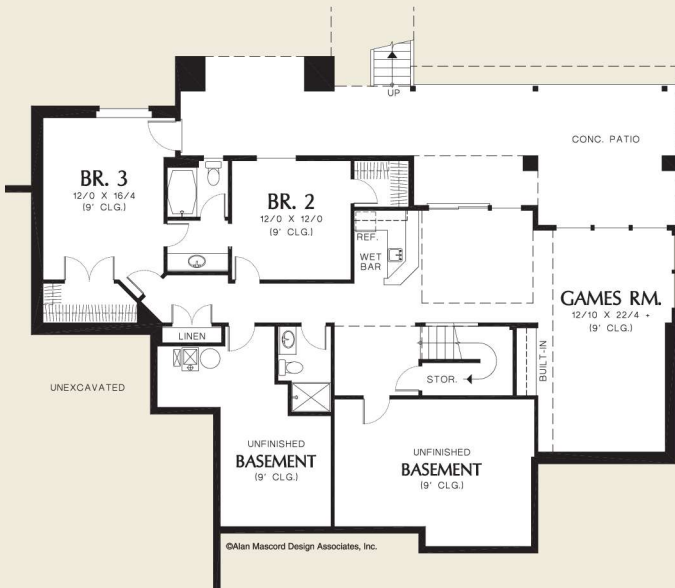


Mascord
ALAN MASCORD DESIGN ASSOCIATES, INC.

The Fullbright
1312AA



©Alan Mascord



Main Floor	2162 Sq. Ft
Basement	1451 Sq. Ft
Total Area	3613 Sq. Ft
Bsmnt (Unfin.)	+543 Sq. Ft

Width 80'-0"
Depth 61'-0"

Height (Main Flr to Peak): 20'-1"
(to Midpt of Roof): 16'-1"

Plan Designed for Sloping Lots



ALAN MASCORD DESIGN ASSOCIATES, INC
2187 NW Reed St, Suite 100, Portland, OR 97210 · 503.225.9161

mascord.com | houseplans.co