



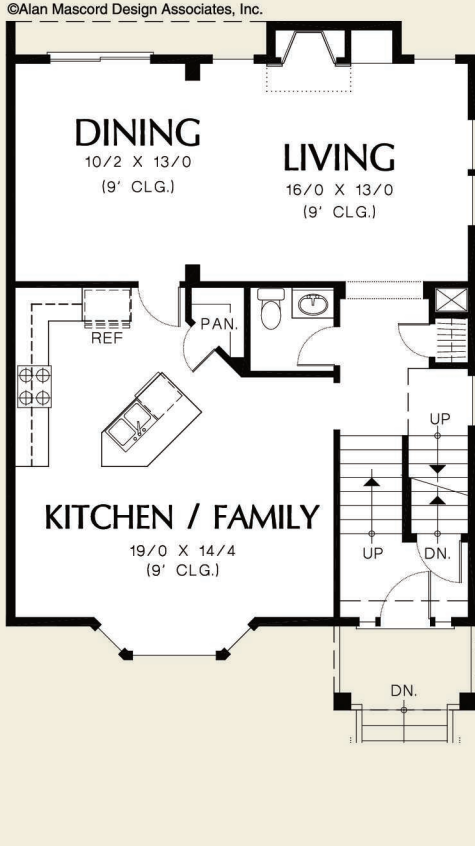
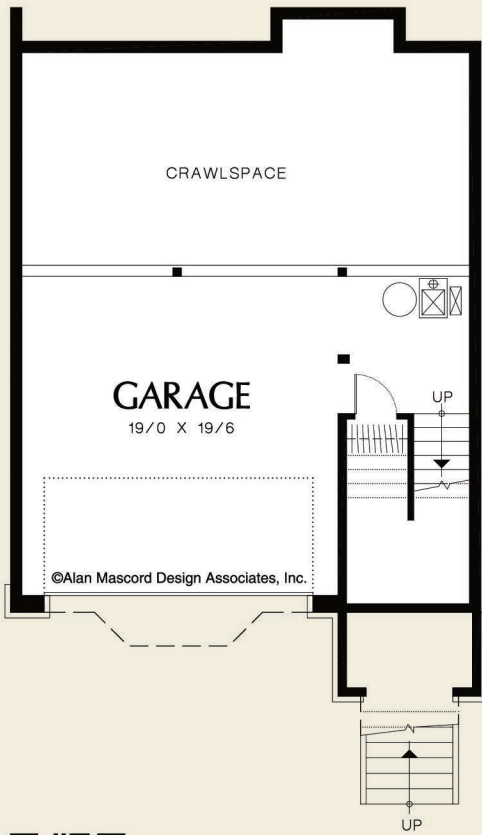
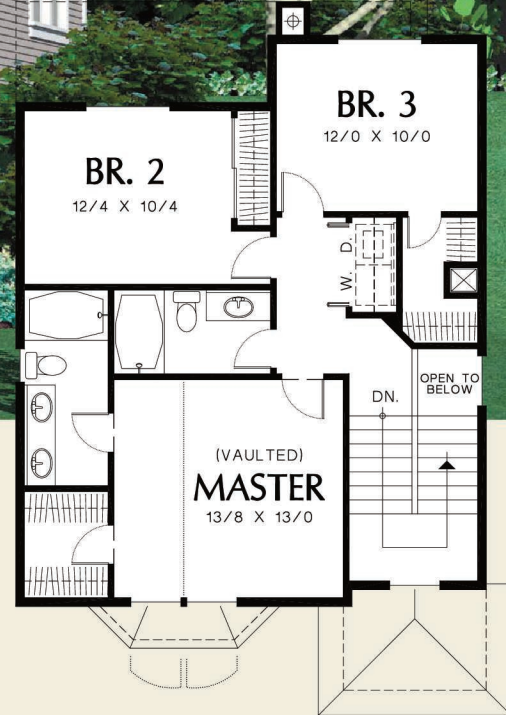
Mascord
ALAN MASCORD DESIGN ASSOCIATES

The Lowell
2197A



©Alan Mascord Design Associates, Inc.

©Alan Mascord Design Associates, Inc.



©Alan Mascord Design Associates, Inc.

Upper Floor	785 Sq. Ft
Main Floor	998 Sq. Ft
Total Area	1783 Sq. Ft
Width	Depth
28'-0"	41'-0"
Height	(Main Flr to Peak): 27'-2"
	(to Midpt of Roof): 22'-8"
Plan Designed for Sloping Lots	



ALAN MASCORD DESIGN ASSOCIATES, INC
2187 NW Reed St, Suite 100, Portland, OR 97210 · 503.225.9161
mascord.com | houseplans.co