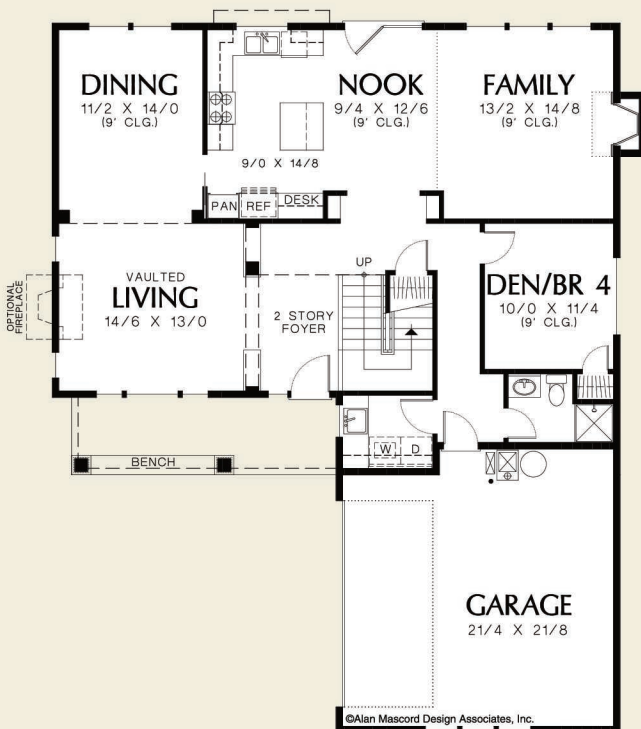




©Alan Mascord Design Associates, Inc.



Upper Floor	788 Sq. Ft
Main Floor	1579 Sq. Ft
Total Area	2367 Sq. Ft
Width	Depth
45'-0"	48'-0"
Height	(Main Flr to Peak): 23'-2"
	(to Midpt of Roof): 15'-10"



ALAN MASCORD DESIGN ASSOCIATES, INC
2187 NW Reed St, Suite 100, Portland, OR 97210 · 503.225.9161

mascord.com | houseplans.co