



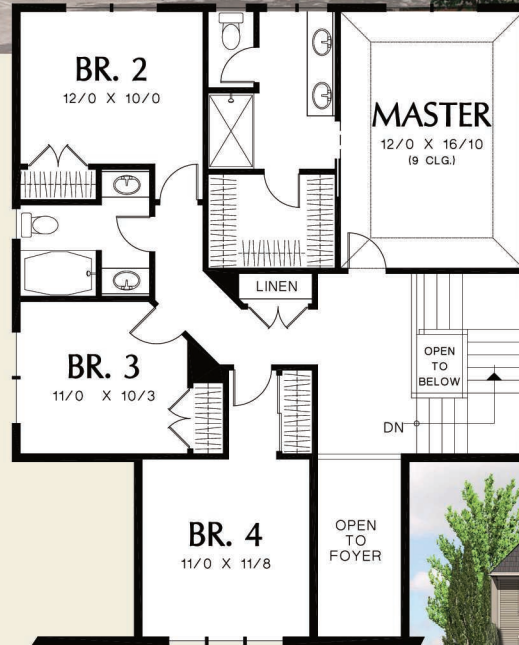
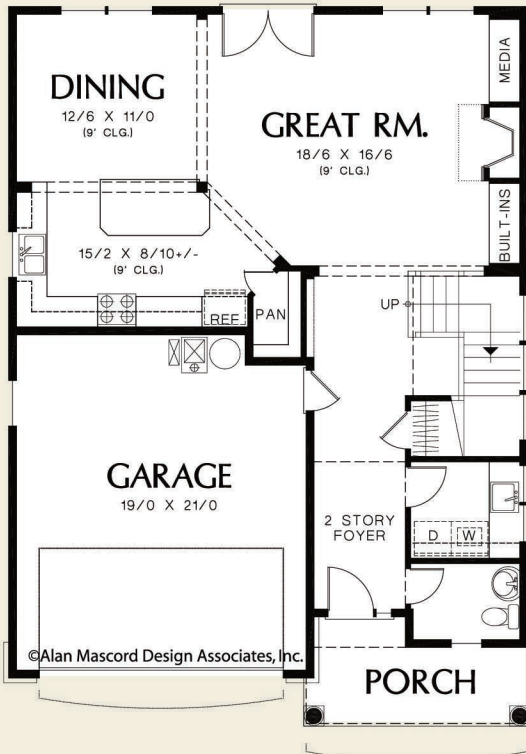
Mascord
ALAN MASCORD DESIGN ASSOCIATES, INC.

The Bloomsdale
22162A



©Alan Mascord Design Associates, Inc.

©Alan Mascord Design Associates, Inc.



Upper Floor	1072 Sq. Ft
Main Floor	1023 Sq. Ft
Total Area	2095 Sq. Ft

Width	Depth
34'-0"	47'-0"

Height (Main Flr to Peak): 28'-8"



ALAN MASCORD DESIGN ASSOCIATES, INC
2187 NW Reed St, Suite 100, Portland, OR 97210 · 503.225.9161

mascord.com | houseplans.co