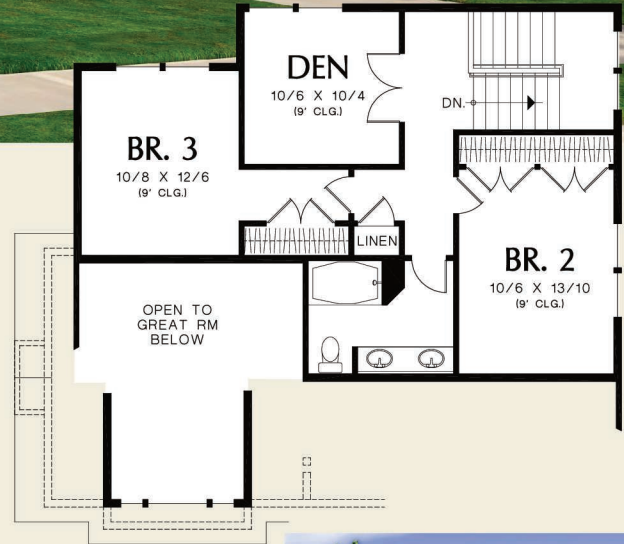
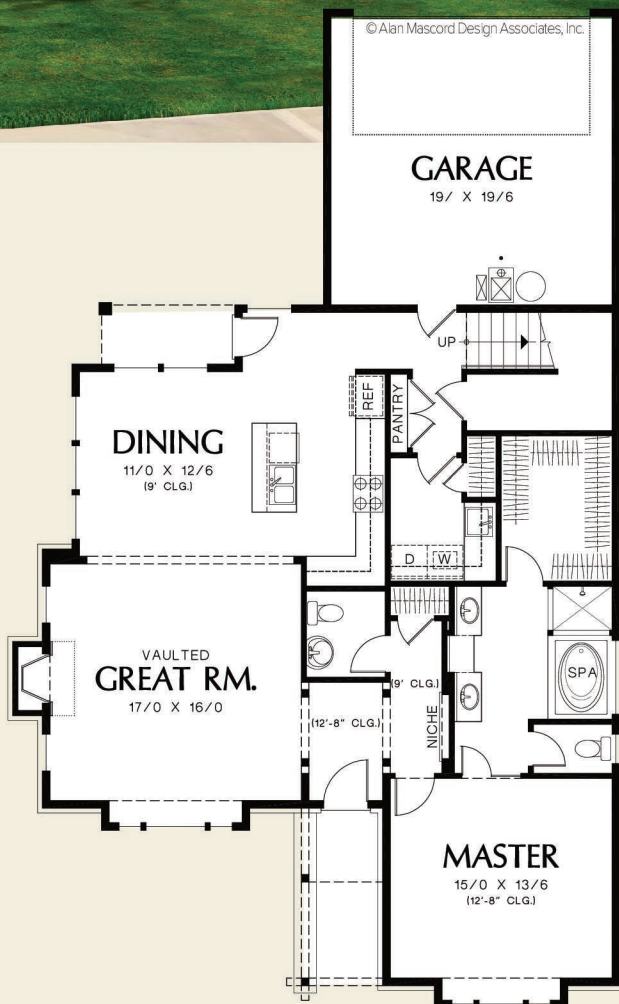




Mascord
ALAN MASCORD DESIGN ASSOCIATES, INC.

The Jamison
22168



Upper Floor	690 Sq. Ft
Main Floor	1470 Sq. Ft
Total Area	2160 Sq. Ft

Width	Depth
39'-0"	67'-6"

Height(Main Flr to Peak): 29'-10"



ALAN MASCORD DESIGN ASSOCIATES, INC
2187 NW Reed St, Suite 100, Portland, OR 97210 · 503.225.9161

mascord.com | houseplans.co