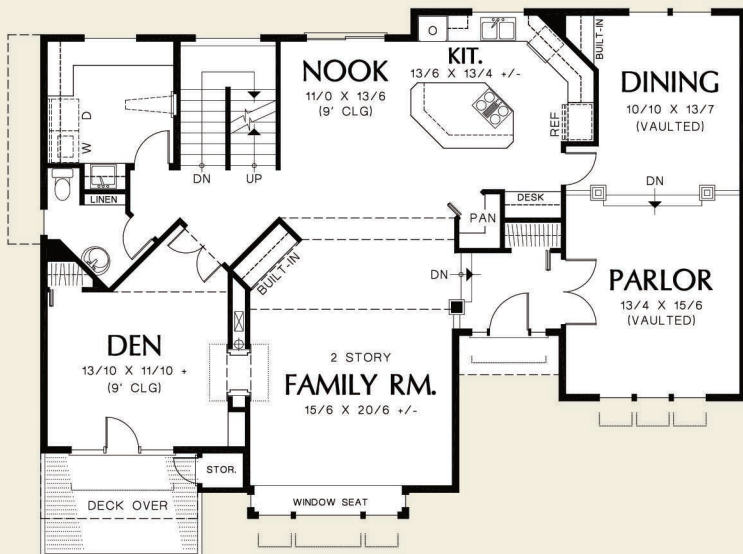
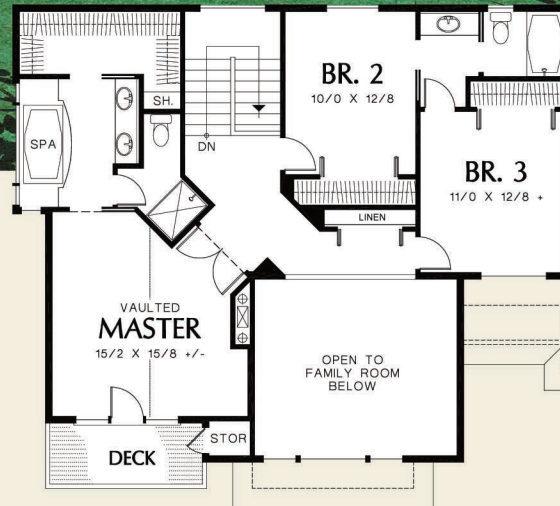
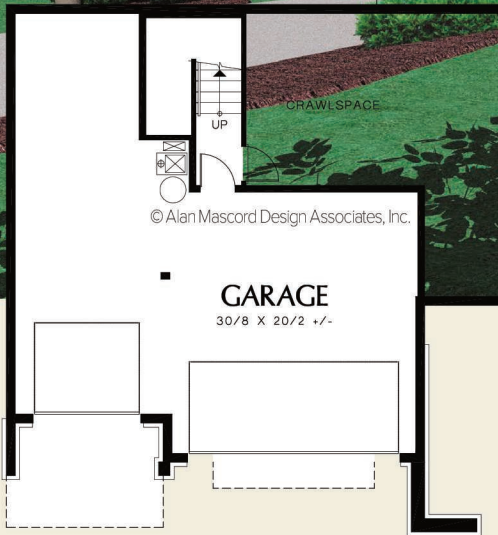




©Alan Mascord Design Associates, Inc.



Upper Floor	986 Sq. Ft
Main Floor	1703 Sq. Ft
Total Area	2689 Sq. Ft

Width	Depth
56'-6"	37'-0"

Height (Main Flr to Peak): 29'-2"
(to Midpt of Roof): 23'-4"

Plan Designed for Sloping Lots



ALAN MASCORD DESIGN ASSOCIATES, INC
2187 NW Reed St, Suite 100, Portland, OR 97210 · 503.225.9161

mascord.com | houseplans.co