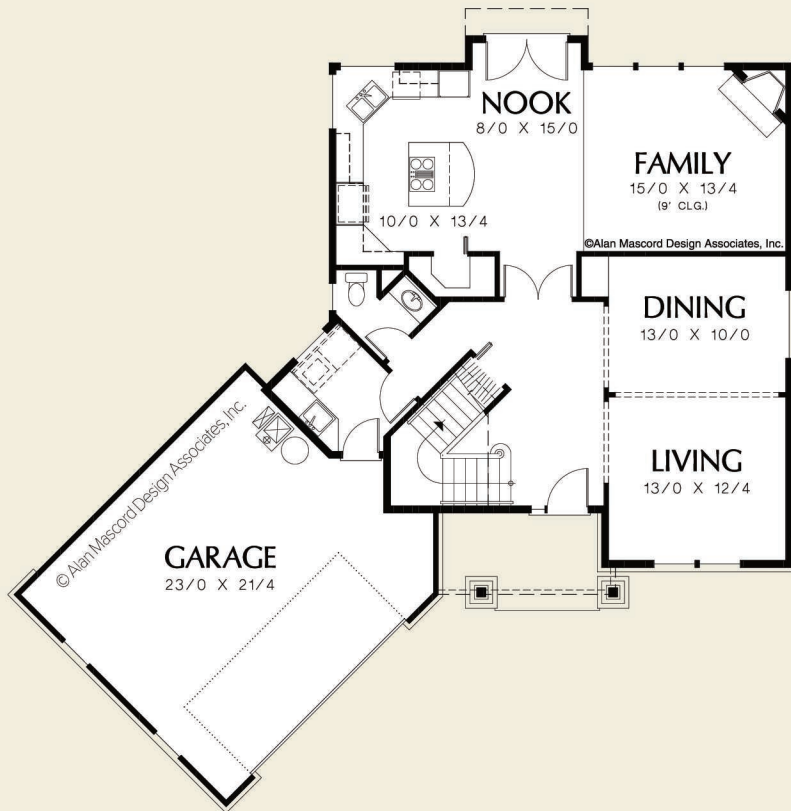
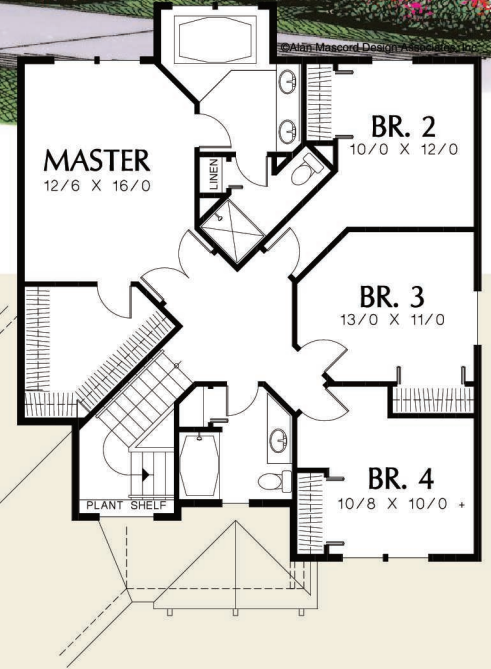


©Alan Mascord Design Associates, Inc.



Upper Floor	1123 Sq. Ft
Main Floor	1205 Sq. Ft
Total Area	2328 Sq. Ft
Width	Depth
57'-2"	58'-6"
Height	(Main Flr to Peak): 31'-4"
	(to Midpt of Roof): 24'-9"



ALAN MASCORD DESIGN ASSOCIATES, INC
2187 NW Reed St, Suite 100, Portland, OR 97210 · 503.225.9161

mascord.com | houseplans.co