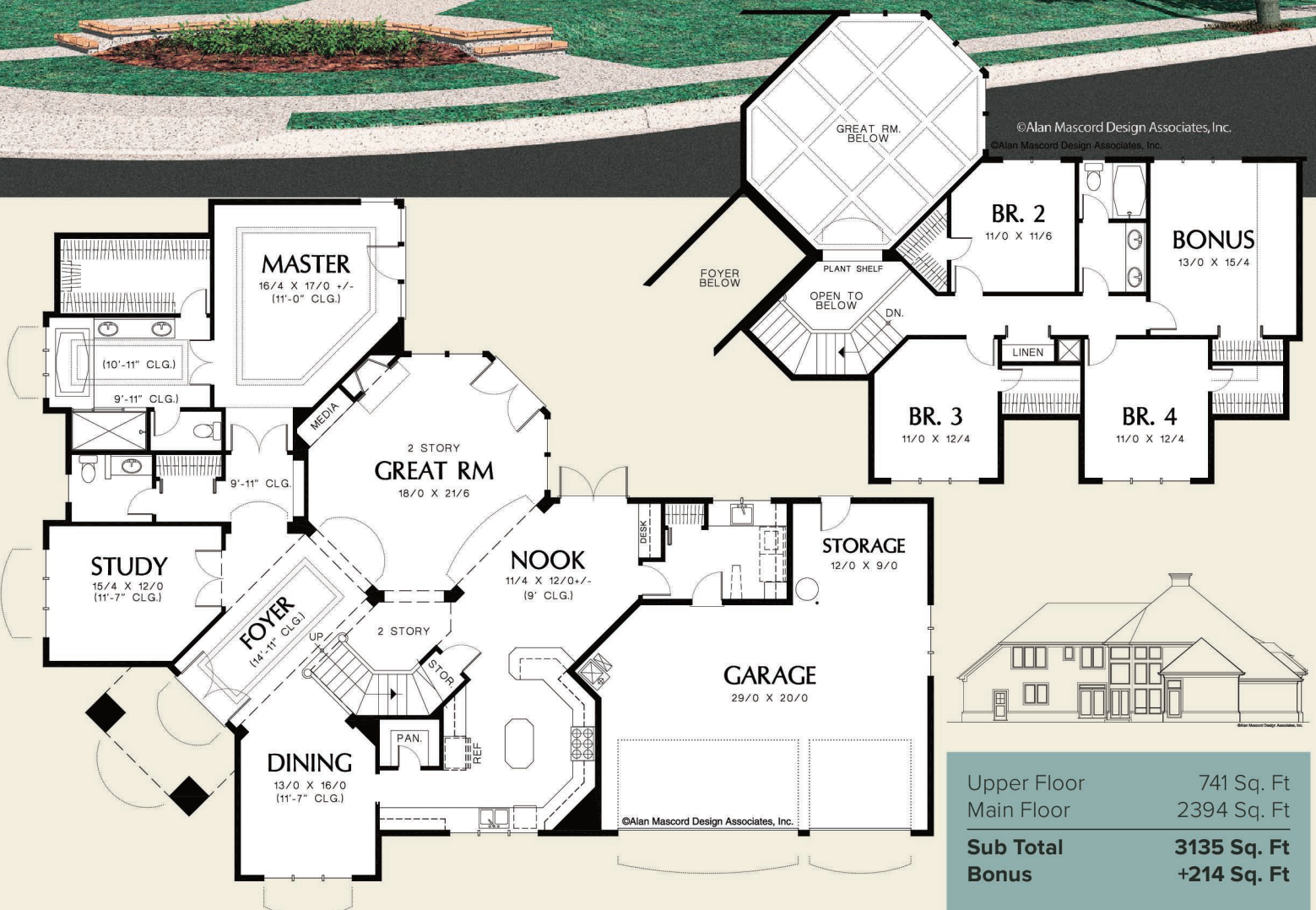




©Alan Mascord Design Associates, Inc.
©Alan Mascord Design Associates, Inc.



Upper Floor	741 Sq. Ft
Main Floor	2394 Sq. Ft
Sub Total	3135 Sq. Ft
Bonus	+214 Sq. Ft
Width	79'-0"
Depth	60'-6"
Height (Main Flr to Peak):	33'-10"
(to Midpt of Roof):	25'-9"



ALAN MASCORD DESIGN ASSOCIATES, INC
2187 NW Reed St, Suite 100, Portland, OR 97210 · 503.225.9161
mascord.com | houseplans.co