



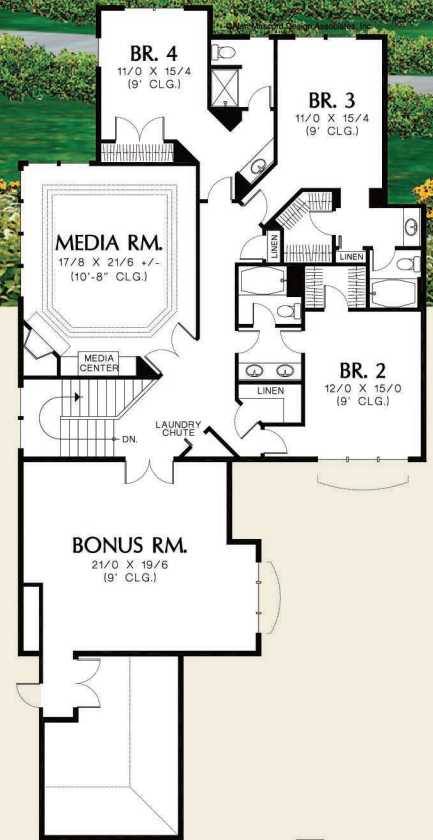
Mascord

ALAN MASCORD DESIGN ASSOCIATES, INC.

The Kirkwood
2401



©Alan Mascord Design Associates, Inc.



Upper Floor	1618 Sq. Ft
Main Floor	4205 Sq. Ft
Sub Total	5823 Sq. Ft
Bonus	+504 Sq. Ft

Width 104'-0"
Depth 97'-0"

Height (Main Flr to Peak): 37'-3"
(to Midpt of Roof): 28'-8"



ALAN MASCORD DESIGN ASSOCIATES, INC
2187 NW Reed St, Suite 100, Portland, OR 97210 · 503.225.9161

mascord.com | houseplans.co