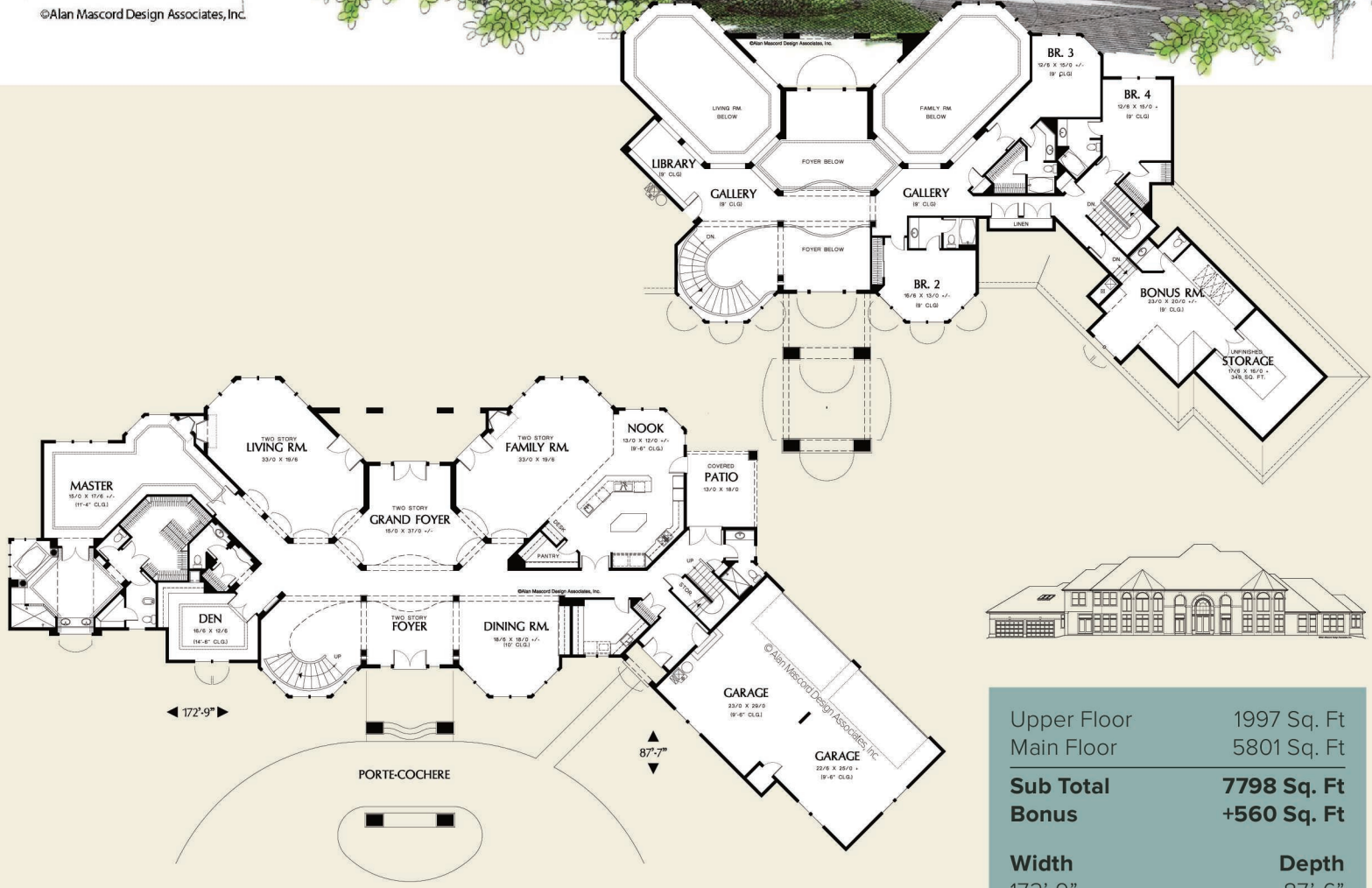




©Alan Mascord Design Associates, Inc.



Upper Floor	1997 Sq. Ft
Main Floor	5801 Sq. Ft
Sub Total	7798 Sq. Ft
Bonus	+560 Sq. Ft
Width	172'-9"
Depth	87'-6"
Height	(Main Flr to Peak): 41'-2" (to Midpt of Roof): 30'-9"



ALAN MASCORD DESIGN ASSOCIATES, INC
 2187 NW Reed St, Suite 100, Portland, OR 97210 · 503.225.9161
 mascord.com | houseplans.co